



**ALASKA DIVISION OF HOMELAND SECURITY &
EMERGENCY MANAGEMENT**
SITUATION REPORT 24-123 • May 2, 2024



Toll-Free 1.800.478.2337

Anchorage Area 907.428.7000

SEOC 907.428.7100

<p><u>SEOC Preparedness Level</u> Level 2 – Heightened Awareness</p>	<p align="center">http://ready.alaska.gov</p>	<p><u>National Terrorism Advisory System:</u> Read the NTAS Bulletin here</p>
<p>Maritime Security (MARSEC) Level:1- Minimum Appropriate Security Measures</p>	<p>WHO Novel Coronavirus Pandemic (COVID-19): 2019 Novel Coronavirus</p>	<p><u>Alaska Military Installation Force Protection Level:</u> FPCON Bravo</p>

(Significant changes from previous situation reports are red.)

Significant Issues:

Riverwatch:

Upper Yukon Division: With a report of flooding from Tanana Chiefs Conference (TCC), Division flew in the morning to Manley Hot Springs after observing the Tanana River. Morning weather did not allow a flight to Eagle. On the way to Manley, the Division overflowed Nenana, and no flood concerns were noted with the River at Nenana clear of ice. Upon arrival in Manley Hot Springs, Division observed minor flooding in the park next to the Roadhouse near the bridge with an ice jam 6 miles below Manley. Division issued a Flood Watch for the area through Thursday evening, met with community members, and briefed TCC on conditions.

Division then flew downriver to Tanana to further assess conditions, returned to Manley Hot Springs, and reported, and then returned to Fairbanks. Division remained in active contact with Manely and Eagle overnight. Special Weather Statement for high water near Eagle remains in effect.

Kuskokwim Division – Deployed to Bethel today and immediately got in the air to Crooked Creek to check River conditions with a member of Bethel Search and Rescue accompanying the Division. Division was advised of a fuel shortage concern in Tuluksak.

Division arrived in Crooked Creek and briefed the Council and community on river and ice conditions. Division then departed Crooked Creek and flew the Kuskokwim River upriver to Sleetmute, then back to Aniak to check conditions. Division landed in Aniak, reported, then returned to Bethel. Kwethluk City Manager reported to SEOC river ice had destroyed their water intake pump leaving the community with 3-5 days of potable water. SEOC advised the Kuskokwim Division while in the air to Crooked Creek and ADEC, ANTHC, YKHC. Division intends to assess the damage today.

Cooper River Division – Area Incident Command reported high water in culverts and low-lying areas, and 10” of water in the Glennallen Fire Station. SEOC advised state agencies, as there are potential impacts to the Glenn Hwy. State Department of Transportation and Public Facilities is mobilizing a high-capacity pump to the area and plan to have it operational by this afternoon.

State of Alaska Department of Health (DOH)

The DOH stands ready to assist with all aspects of public health and, in the event of a public health emergency, is supported by the SEOC and other state departments as required.

For current information, see: <https://health.alaska.gov/dph/Pages/default.aspx>
<https://health.alaska.gov/dph/Emergency/Pages/prepared/default.aspx>

NTAS Bulletin

The U.S. Department of Homeland Security issued an updated National Terrorism Advisory Bulletin on May 24, 2023. The current and expired bulletins can be viewed at the below link.
<https://www.dhs.gov/national-terrorism-advisory-system>

Travel Alerts and Conditions

For current driving conditions, dial 511 or visit: <https://511.alaska.gov/>

Barry Arm Landslide / Tsunami Risk

For the latest information on the Barry Arm Landslide and Tsunami risk, click here:
<https://dggs.alaska.gov/hazards/barry-arm-landslide.html>

Earthquakes

A series of earthquakes ranging from 5.0 to 5.5 magnitude was reported 6 miles southwest of Nikolski, Alaska. There was no tsunami danger or reported damages.

United States Geological Service (USGS) Earthquake Information: <http://earthquake.usgs.gov/>
National Tsunami Warning Center: <http://tsunami.gov/>

Alaska Volcanoes

Great Sitkin Alert Level: **Watch** and Aviation Color Code: **Orange**
Shishaldin Alert Level: **Advisory** and Aviation Color Code: **Yellow**

For Alaska Volcano updates, go to: <https://www.avo.alaska.edu/>

Air Quality Index (AQI) Advisories

For the most up-to-date Air Quality Index Advisories:
<http://dec.alaska.gov/Applications/Air/airtoolsweb/Home/Index>

Spills of Oil and Hazardous Substances

The Alaska Division of Environmental Conservation (ADEC) Spill Prevention and Response page is located at: <https://dec.alaska.gov/spar/>

Alaska Cyber Security Information

State Employees may sign up for cybersecurity notifications and alerts at:
<https://oit.alaska.gov/security>

Cybersecurity and Infrastructure Security Agency (CISA)-Cybersecurity Services and Tools:
www.cisa.gov/free-cybersecurity-services-and-tool

Alaska Wildland 2024 Fire Season:

The Alaska Interagency Coordination Center is at Preparedness Level: 1

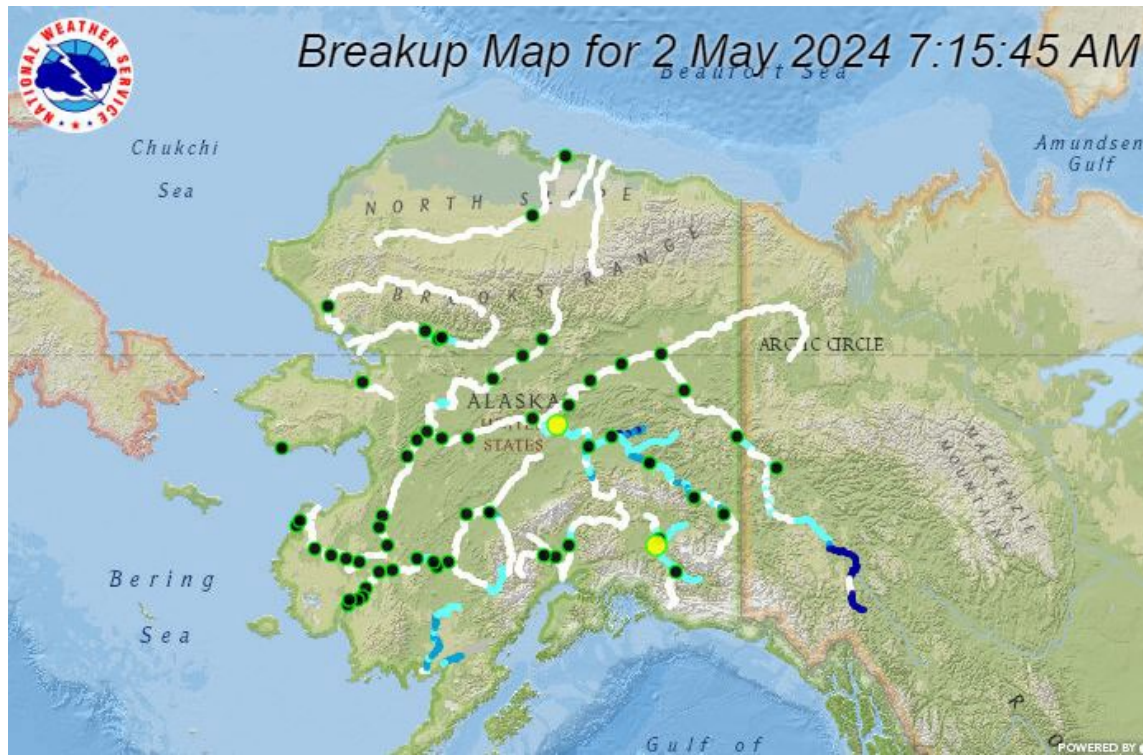
Total Fires YTD: **39**

Total Acres: **34**

There are currently **8** active fire(s) with **2** new and **0** fires staffed.

For more information, go to <https://fire.ak.blm.gov/> or <https://akfireinfo.com/>

Riverwatch Breakup Outlook:



This map allows you to view the breakup status of major rivers. Click a site for more breakup information.

River Status

- Unknown
- Mostly Ice
- Some Open
- Mostly Open
- Open
- Flood Advisory
- Flood Watch
- Flood Warning

Community Status

- No Warning
- Flood Advisory
- Flood Watch
- Flood Warning

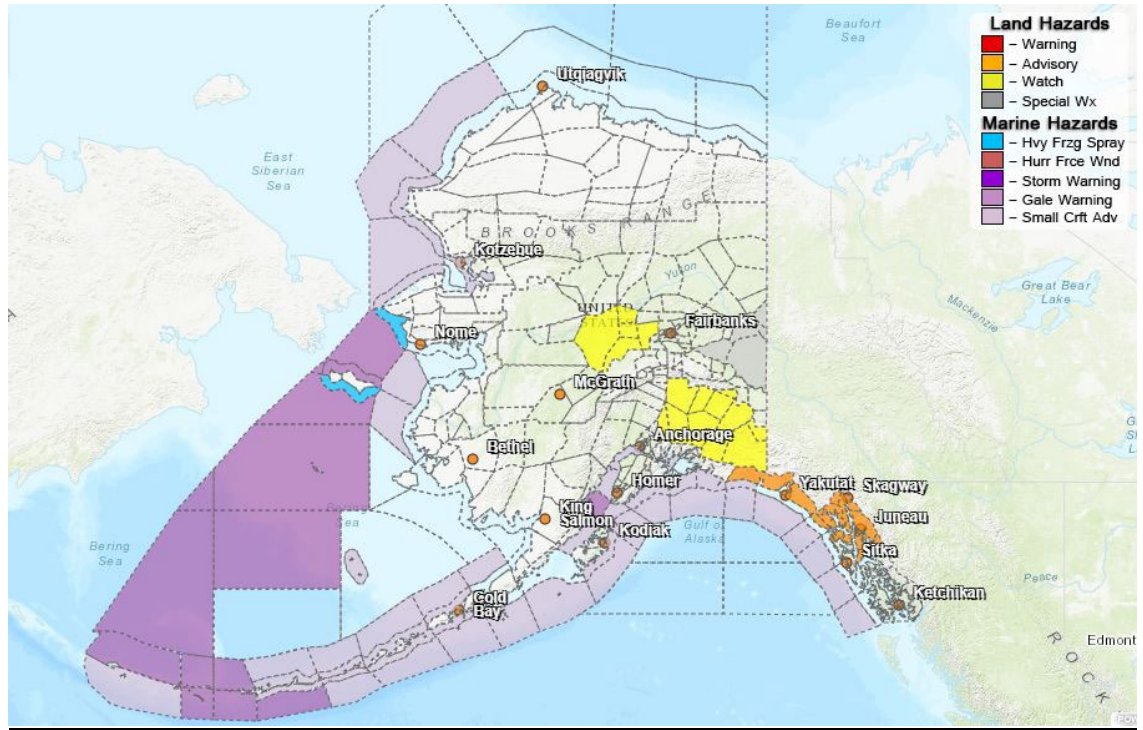
Flood Advisory
 Issued when flooding is imminent or occurring, generally within the next 1 to 3 hours, but is not expected to substantially threaten life and property.

Flood Watch
 Issued when there is the possibility of widespread general flooding over an area within the next 36 hours.

Flood Warning for River Fcst Point
 Issued when a river level has exceeded, or is forecast to exceed, moderate or major flood stage.

View Recent River notes and updates at: [Alaska-Pacific RFC \(weather.gov\)](http://Alaska-Pacific RFC (weather.gov))

Significant Weather



Flood Watch:

Copper River Basin – Food watch for snowmelt continues in effect through Monday evening across the copper river basin... Specifically Glennallen.

Central Interior – Flood Watch for an ice jam now in effect through Thursday afternoon.

Special Weather Statement: Forty-mile Country – Due to the current river levels and ice conditions, the threat for flooding is diminished in the area around Eagle. However, ice jams can still pose a localized threat in the areas immediately around where they form.

For more information and the most current Weather, Watches/Warning/Advisories go to:
<https://www.weather.gov/arh/>

The Next Situation Report will be **May 3, 2024**. A significant change in the situation or the threat level will prompt an interim report. This report is posted on the internet at <https://ready.alaska.gov/sitrep>.

To register for email distribution, go to <http://list.state.ak.us/mailman/listinfo/dhsem.situation.report>.
Direct questions regarding this report to the SEOC at 907-428-7100 or seoc@alaska.gov.